



Wilkes Close, Mill Hill, NW7 1FP
£780,000 Freehold Council Tax Band F

REAL ESTATES
Est. 1981

Estate Agents · Residential Sales · Investments · Lettings

Real Estates are delighted to offer this MODERN, well presented mid terrace 3 BEDROOM 2 BATHROOM (1 EN SUITE) family home set in the popular Millbrook Park development in Mill Hill East.

Arranged over 3 storeys, this property features a separate fitted kitchen and dining area, guest cloakroom and reception room on the ground floor, leading out onto the rear garden. The upstairs accommodation comprises 2 double bedrooms and a 'Jack & Jill' bathroom on the 1st floor, with a principal suite occupying the entire top floor, benefitting from an en-suite bathroom, storage cupboard and wardrobe area.

Externally, the house comes with covered off-street parking for 1 car.

Wilkes Close is a quiet cul-de-sac ideally situated just a short walk away from Mill Hill East Northern Line Underground Station, Waitrose, and Virgin Active Gym. The large green space of Panoramic Park is located in the heart of the estate.

Sole Agent

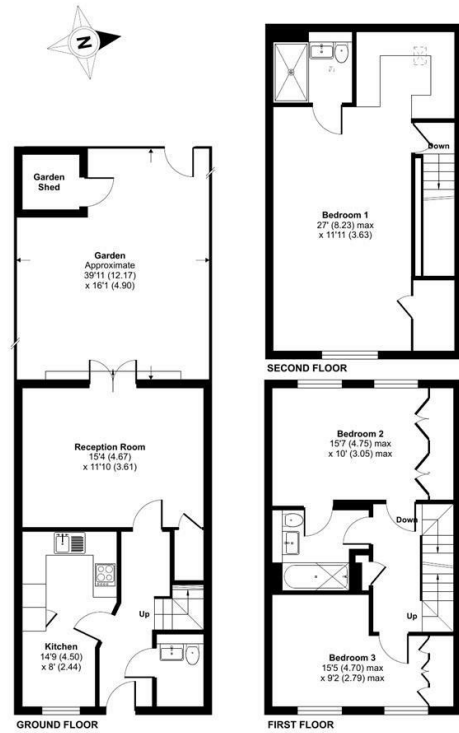




Wilkes Close, London, NW7

Approximate Area = 1242 sq ft / 115.3 sq m

For identification only - Not to scale



Floor plan produced in accordance with RICS Property Measurement 2nd Edition, incorporating International Property Measurement Standards (IPMS2 Residential). © nichcom 2024. Produced for Real Estates. REF: 1204549

Energy Efficiency Rating		Current	Potential
Very energy efficient - lower running costs			
A	92-100	86	95
B	81-91		
C	69-80		
D	55-68		
E	39-54		
F	21-38		
G	1-20		
Not energy efficient - higher running costs			
EU Directive			



Real Estates Woodside Park Office:
14/14a Sussex Ring
Woodside Park N12 7HX

ll : 020 8445 6387
e : info@realestates-wsp.co.uk
w : www.realestates-wsp.co.uk